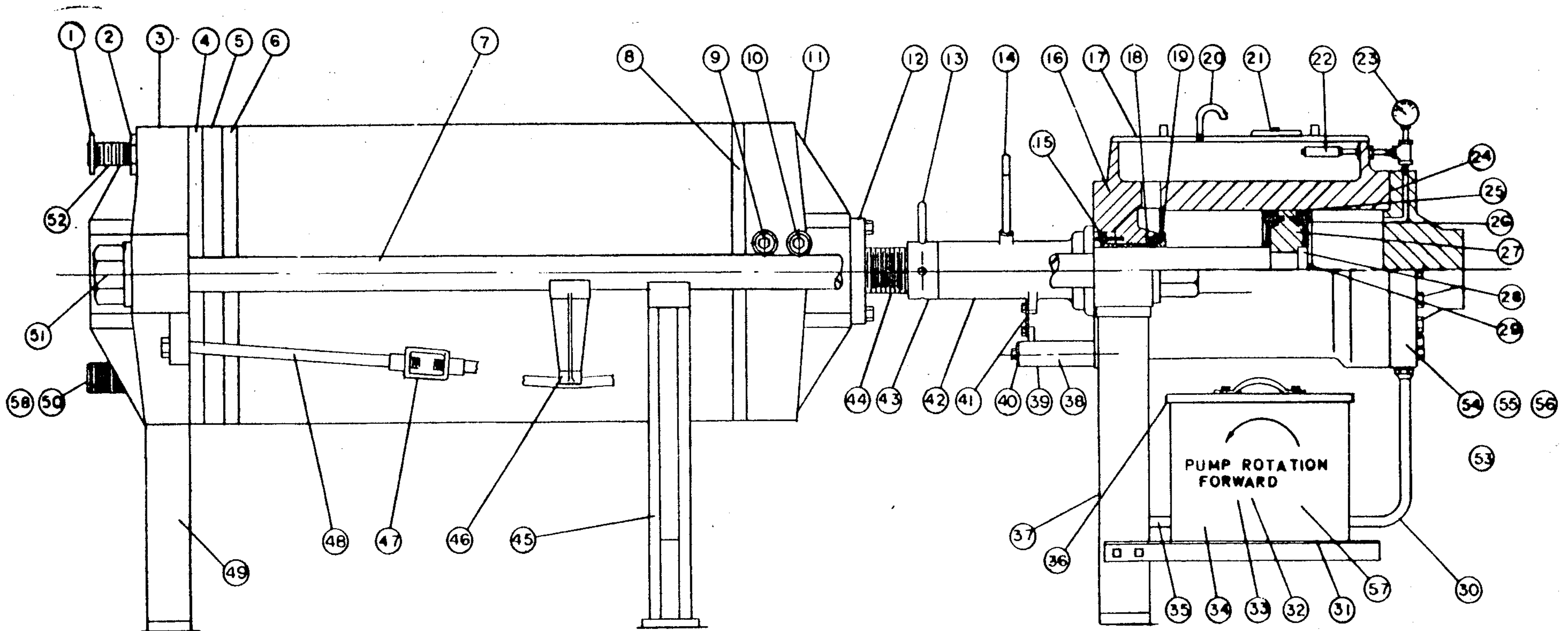
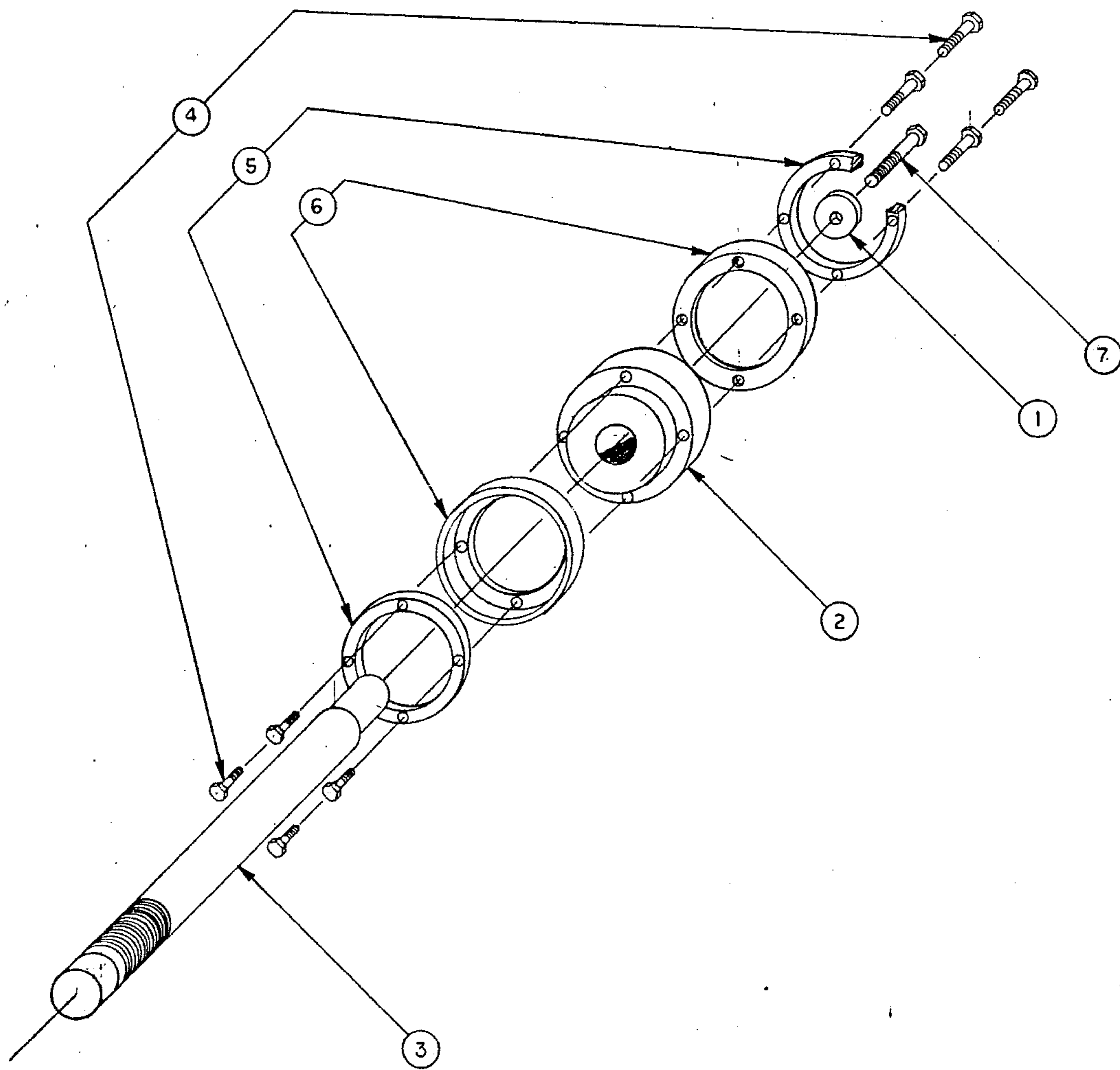


EHCL PARTS LISTS



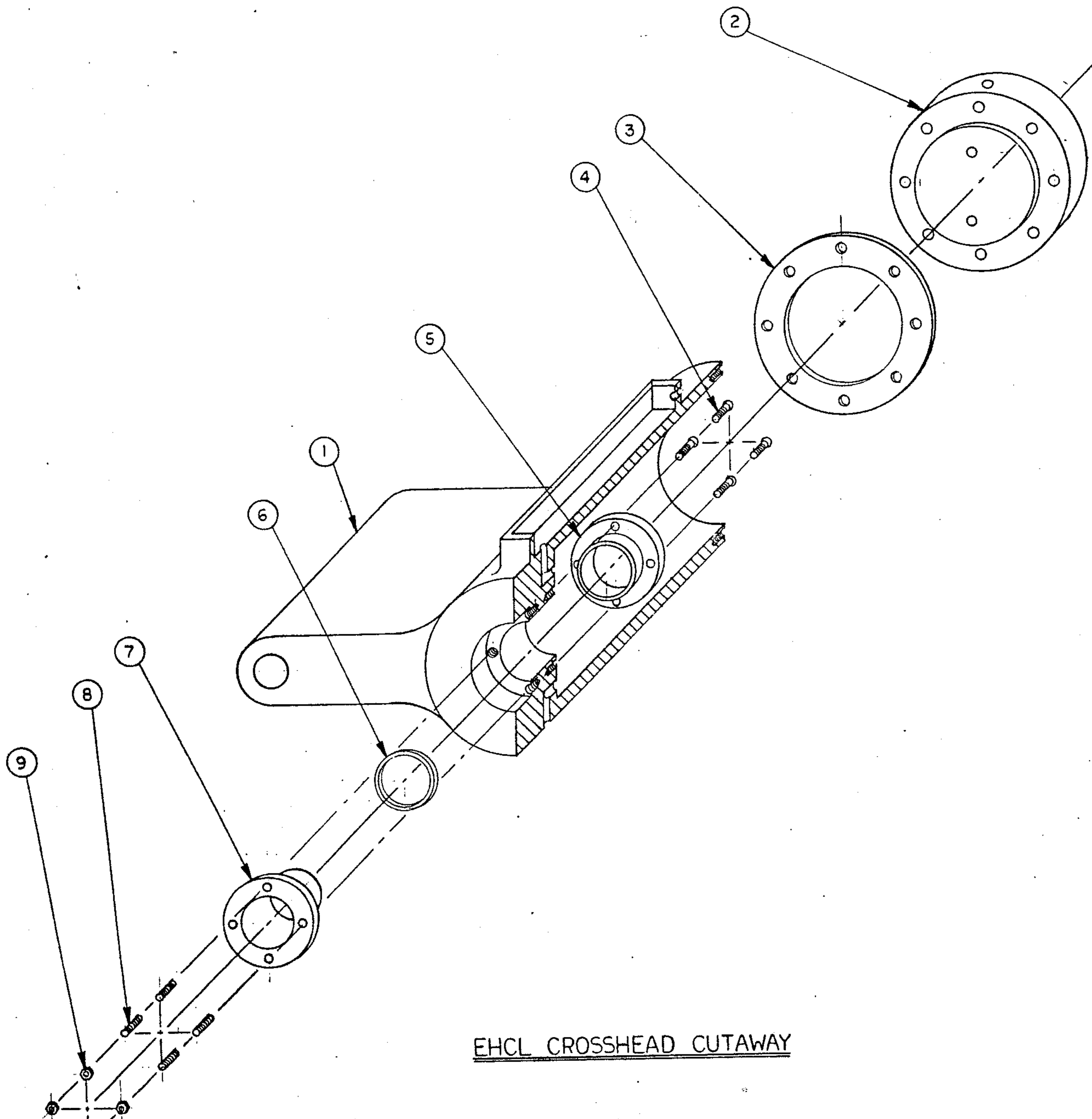
| ITEM NO | PART NO | DESCRIPTION | ITEM NO | PART NO | DESCRIPTION | ITEM NO | PART NO | DESCRIPTION | ITEM NO | PART NO | DESCRIPTION |
|---------|---------|-----------------------|---------|---------|---------------------------|---------|---------|----------------------------|---------|---------|--------------------|
| 1 | 17- | FLANGE | 19 | 24- | INSIDE GLAND (L-71) | 37 | 15- | CYLINDER LEG (L-15) | 55 | 24- | SIGHT GLASS (E-58) |
| 2 | 17- | LOCKNUT | 20 | 24- | BREATHER (E-58) | *38 | 8- | FILLER PIVOT SHAFT (L-14D) | *56 | 9- | TRUSS ROD PLATE |
| 3 | 4- | FIXED HEAD | 21 | 5- | VLV COVER (L-55-A) | 39 | 14- | FILLER PIVOT (L-14Q) | *57 | 24- | FLEX COUPLING |
| 4 | 48- | FIXED HEAD PLATE | 22 | 24- | RELIEF VLV (E-72) | 40 | 28- | PIVOT WASHER (L-14-1) | *58 | 17- | LOCKNUT |
| 5 | 53- | FRAME | 23 | 36- | GUAGE (E-59) | 41 | 14- | FLEX JOINT (L-14B) | | | |
| 6 | 49- | REGULAR PLATE | 24 | 28- | GASKET HI PRESS (E-3-1) | 42 | 14- | FILLER (L-14) | | | |
| 7 | 8- | SIDE BAR | 25 | 24- | CUP LEATHER (E-1) | 43 | 17- | LOCKNUT (L-17) | | | |
| 8 | 48- | SLIDE HEAD PLATE | 26 | 24- | PISTON RING (E-60) | 44 | 19- | PISTON ROD (L-5) | | | |
| 9 | 8- | ROLLER SHAFT | 27 | 24- | PISTON (E-6) | 45 | 9- | FLOOR SUPPORT | | | |
| 10 | 12- | ROLLER | 28 | 24- | PISTON WASHER (L-5-2) | 46 | 9- | TRUSS PROP | | | |
| 11 | 11- | SLIDE HEAD (L-11) | 29 | 27- | PISTON SCREW (E-5-3) | 47 | 9- | TURNBUCKLE | | | |
| 12 | 14- | PULL BACK PLT (L-25) | 30 | 61- | HOSE CAP END (E-61) | 48 | 8- | TRUSS ROD | | | |
| 13 | 29- | HANDLE (L-17-1) | 31 | 34- | PUMP AND MTR BASE (E60-9) | 49 | 6- | SHORT LEG | | | |
| 14 | 29- | HANDLE FILLER (L-14A) | *32 | 24- | PUMP BRACKET | 50 | 1- | HEAD CONNECTION | | | |
| 15 | 24- | GLAND OUTSIDE (E-67) | *33 | 61- | PUMP (E60-1) | 51 | 2- | SHAFT NUT | | | |
| 16 | 24- | CYLINDER (L-13) | *34 | 60- | MOTOR (E60-2) | 52 | 1- | HEAD CONNECTION | | | |
| 17 | - | COVER (L-55) | 35 | 61- | HOSE-ROD END (E61) | *53 | 60- | CONTROLLER (E-57) | | | |
| 18 | 28- | PACKING (L-5-1) | 36 | 3- | BOX COVER | 54 | 24- | HI PRESS END (E-3) | | | |

*PART NOT SHOWN



| ITEM NO. | DESCRIPTION |
|----------|--------------------------|
| 1 | RETAINING WASHER 1 REQ'D |
| 2 | PISTON 1 REQ'D. |
| 3 | RAM 1 REQ'D. |
| 4 | SCREWS AS REQ'D |
| 5 | PISTON RING 2 REQ'D. |
| 6 | CUP SEAL 2 REQ'D. |
| 7 | HEX BOLT 1 REQ'D. |

PISTON RAM ASS'Y.



| ITEM NO | DESCRIPTION |
|---------|-----------------------------|
| 1 | CROSSHEAD 1 REQ'D. |
| 2 | HIGH PRESSURE HEAD 1 REQ'D. |
| 3 | GASKET 1 REQ'D. |
| 4 | MOUNTING SCREWS 4 REQ'D. |
| 5 | INSIDE GLAND 1 REQ'D. |
| 6 | PACKING 1 REQ'D. |
| 7 | OUTSIDE GLAND 1 REQ'D. |
| 8 | GLAND STUDS 4 REQ'D. |
| 9 | HEX NUTS 4 REQ'D. |

NOTES

- 1. HEAD MOUNTS WITH HEX NUTS & STUDS NOT SHOWN.
- 2. FOR PISTON DETAIL SEE SHEET 3.

EHCL CROSSHEAD CUTAWAY